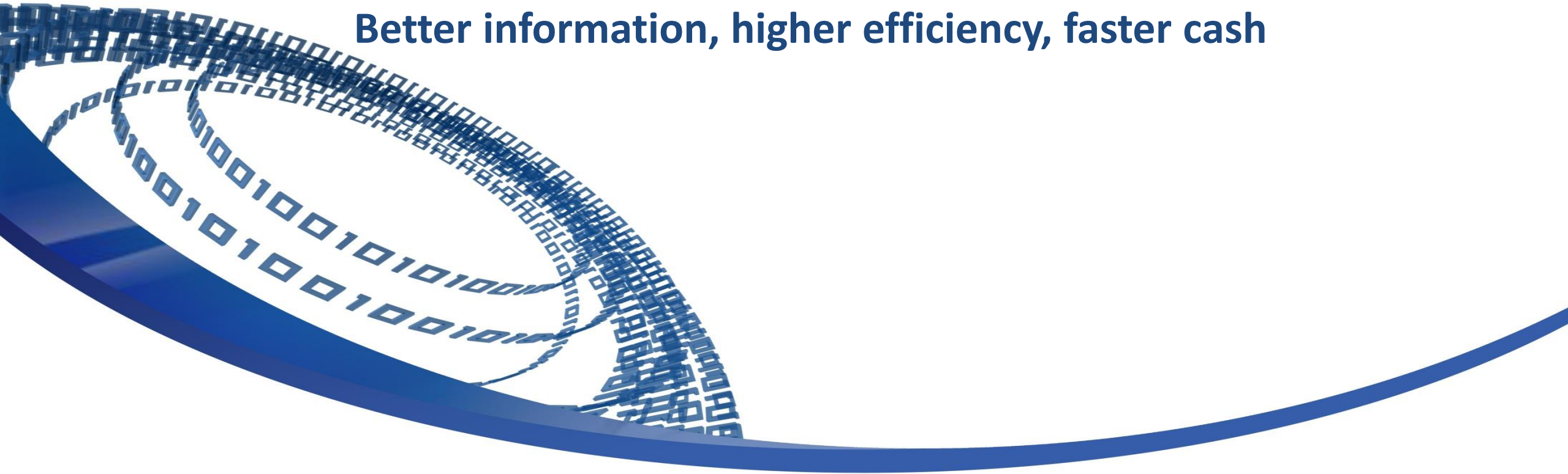


Ruschlikon

Better information, higher efficiency, faster cash



Better information, higher efficiency, faster cash

Steering Committee

ACORD

AON



everest



Gallagher Re

GuyCarpenter

Hannover Re

HOWDEN



LIMOSS
London Insurance Market
Operations & Strategic Sourcing

LLOYD'S

LOCKTON
REINSURANCE

MAPFRE | RE

Marsh

Munich RE

PartnerRe



RenaissanceRe

SCOR

Swiss Re

wtw

The Ruschlikon Initiative connects **leading players of the (re)insurance industry** to advanced processes such as

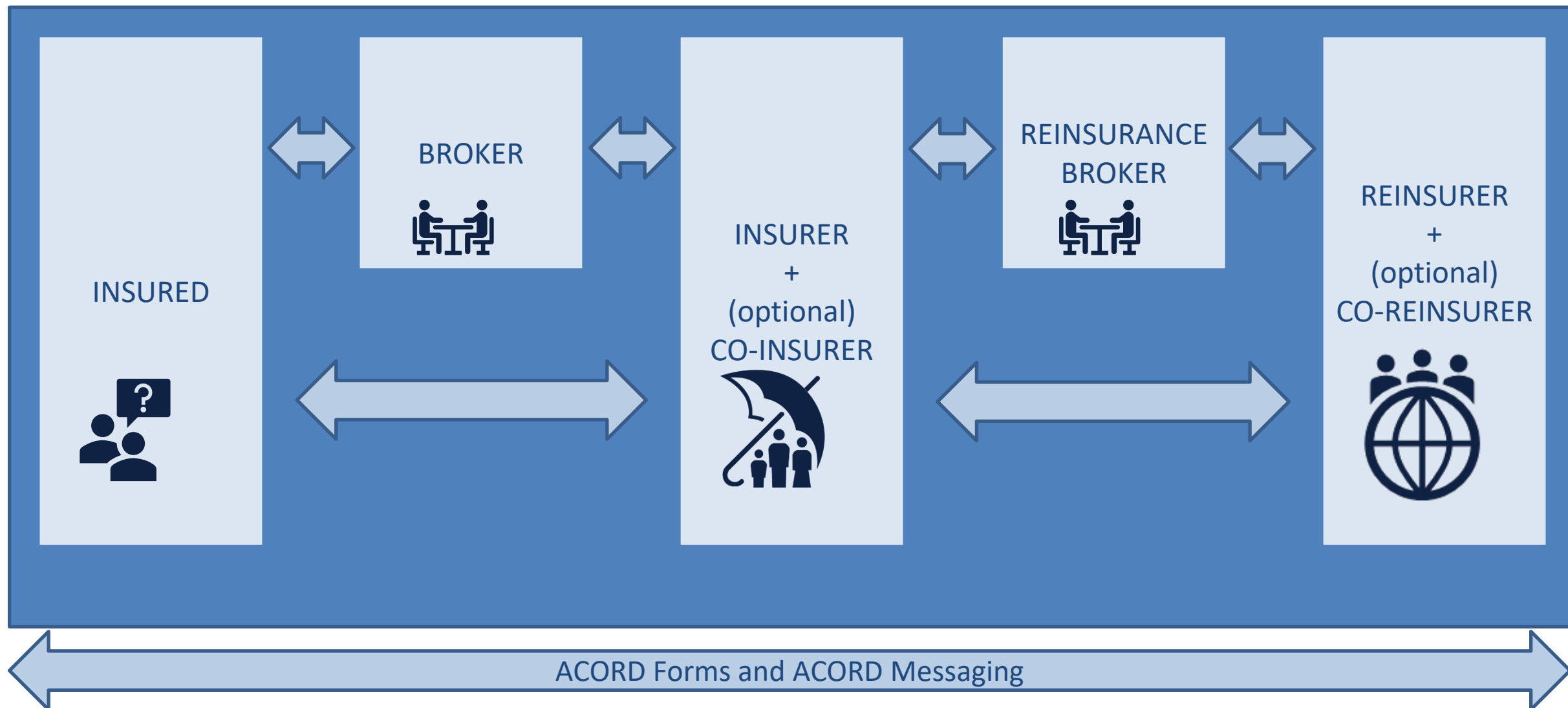
- risk placing,
- technical accounting,
- claims and settlement

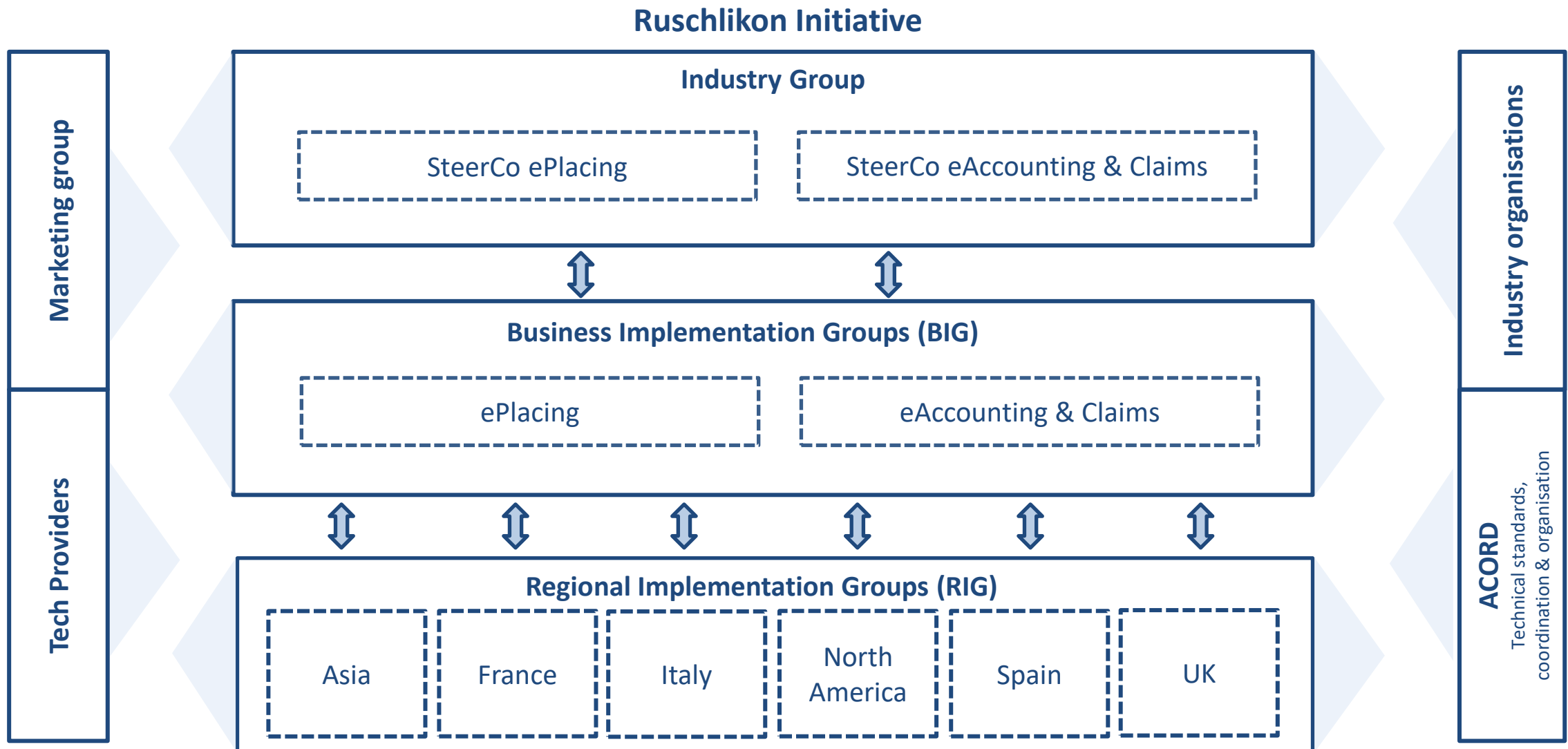
using the ACORD Global Reinsurance and Large Commercial (GRLC) Standards.

Your benefits at a glance

- | | |
|---------------------------|------------------------------------|
| ✓ Improved Cash Flow | ✓ Cost Reductions |
| ✓ Improved Data Integrity | ✓ Increased Effectiveness |
| ✓ Increased Efficiency | ✓ Process Automation & Integration |

Scope of Ruschlikon activities - From bid to bind & from accounting to claims handling





Steering Committees – ePlacing and eAccounting and Claims

- Determine objectives, strategy and priorities
- Work in close collaboration with all stakeholders
- Globally coordinate activities with other representative groups such as industry associations, vendors, etc.



SteerCo Members (Leads to contact details, same as other groups)

Contact@Ruschlikon.com

Business Implementation Group ePlacing (ePBIG)

- Standardize the generic data attributes used in the various phases of placing using existing (or where necessary enhanced) standards
- Agree and formalize process flows & protocols for placing in line with business needs
- Build best practice and implementation guides, share success factors and potential challenges
- Enhance the test harness infrastructure by including ePlacing tests to support smooth deployments



Chair ePlacing BIG (Leads to contact details, same as other groups)

Contact@Ruschlikon.com

- Evaluates/refines enhancements - to be submitted to the ACORD standard process for approval by all relevant ACORD members
- Maintains the Global (Re)insurance Best Practice, Implementation and Reference guides
- Coordinates changes across the entire Ruschlikon community to support uniform adoption of the Ruschlikon Best Practice and ACORD data standards



Chair eAccounting and Claims BIG
(Leads to contact details, same as other groups)

Contact@Ruschlikon.com

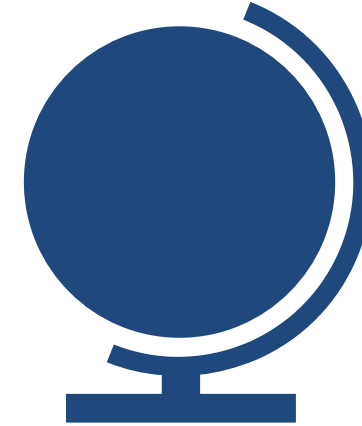
- Support the global objectives of Ruschlikon Community as a whole
- Support growth and requests from Regional Implementation Groups
- Manage and maintain the Ruschlikon web content
- Conception, preparation, production and maintenance of relevant marketing materials
- Support for Ruschlikon relative external/internal events



Chair Marketing Group (Leads to contact details, same as other groups)

Contact@Ruschlikon.com

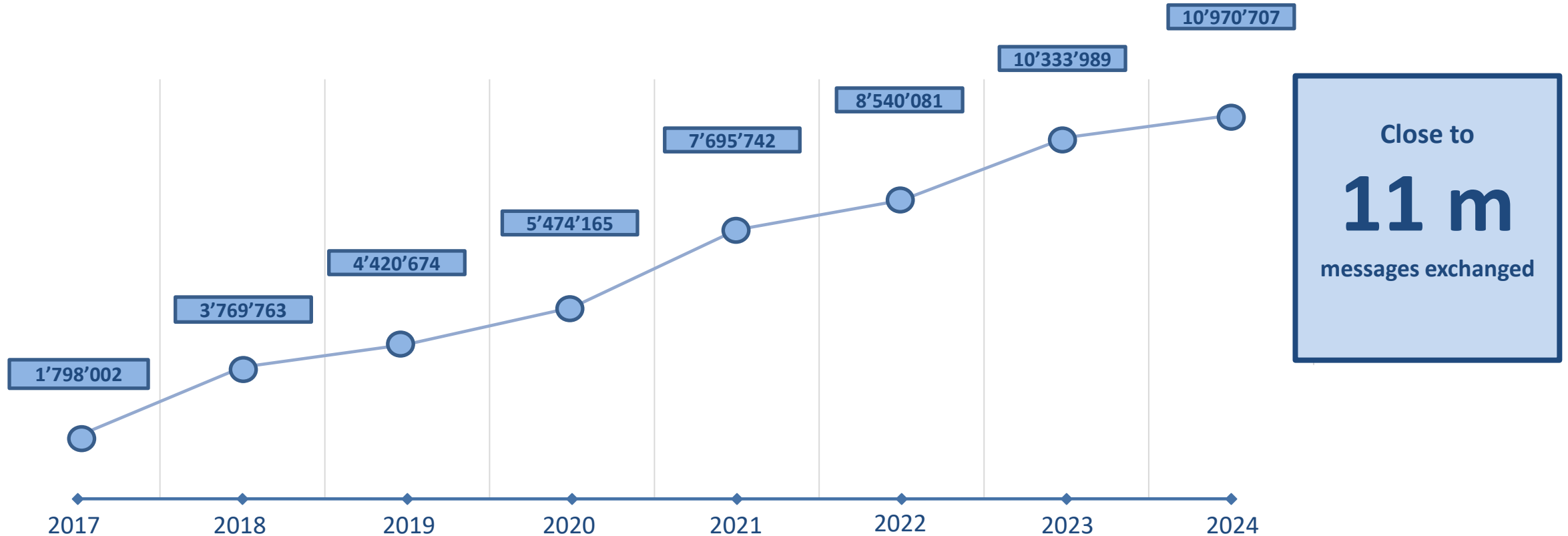
- Fosters the Ruschlikon approach in a local environment and helps drive local implementation
- Pick up on market specifics and address them efficiently to other Ruschlikon bodies
- Joining forces with other market players to address business needs more powerfully, as one community
- Leverage efforts and experience across the regions to aid implementation



Chair Regional Implementation
Groups (Leads to contact details,
same as other groups)

Contact@Ruschlikon.com

Ruschlikon Message Volumes 2017 – 2024*



Steady growth proves the concept.
For 2025 a major step ahead due to ePlacing expected.

Find Ruschlikon on Social Media



contact@ruschlikon.com



www.ruschlikon.com



Join us on LinkedIn!

Together we transform the industry.